

**WEST VALLEY
WILDFIRE SAFETY PLAN**

BLACKSTONE EL DORADO

AMENDMENT C

Prepared for:

AKT West Valley Investors

Prepared by:

**William F. Draper
Registered Professional Forester
#898
4645 Meadowlark Way
Placerville, CA 95667**

December 21, 2015

BLACKSTONE EL DORADO

AMENDMENT C

Approved by:



Marshall Cox
Fire Marshal
El Dorado Hills Fire Department

1/12/16
Date



Darin McFarlin, FC
Fire Prevention
California Department of Forestry
And Fire Protection

1-11-16
Date

Prepared by:

William F. Draper
RPF #898

1-12-16
Date



Amendment C

Purpose

Amendment C to the original Wildfire Safety Plan approved in September 1999 provides for setback and access changes. This amendment applies specifically to Lots Y and Z (Lots 6, 7 and 8), Lot 3C, Lot 5C and Lot 7C.

Lots 6, 7 and 8 (Lots Y and Z) are at the north end of the Blackstone development and will provide for the completion of this unit. Lots 3C, 5C and 7C will be in-fill lots to existing neighborhoods.

Fire Safe Standard Changes

All lots within the above designated Lots adjacent to Open Space shall not be required to have lockable pedestrian gates allowing emergency personnel access to the Open Space.

All lots 1 acre or larger and not adjacent to Open Space shall not need to meet the 30 foot setback requirements. Setbacks as outlined in the Valley View Specific Plan zoning for these developments shall be adequate.

All lots 1 acre or larger and adjacent to Open Space may have setbacks less than 30'. Building Code 7A provisions shall be used to meet the "same practical effects" provision in Fire Safe Standards as the 30' setback on the sides and rear. Setback of 20' on the front shall only be required to meet standard building code requirements.

All previously agreed to provisions in the Wildfire Safety Plan and amendments shall remain in effect.



1500 W. STATE ST., SUITE 100
 SACRAMENTO, CA 95811
 TEL: 916.441.1500
 FAX: 916.441.1501
 WWW.CTASURVING.COM

PRELIMINARY GRADING & BUILDING PLAN

WEST VALLEY VILLAGE, LOT 6 & 7
 LOTS 2 & 3 OF S.D. J-111

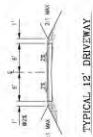
COUNTY OF EL DORADO
 MAY, 2014

SHEET 1 OF 1

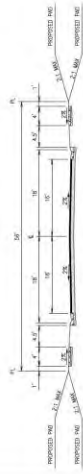
STATE OF CALIFORNIA
 SCALE: 1"=60'



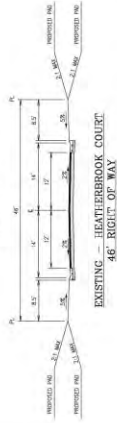
VICINITY MAP
 NOT TO SCALE



TYPICAL 12' DRIVEWAY
 SCALE: 1"=10'



EXISTING - EAGLE CREEK STREET
 50' RIGHT OF WAY
 SCALE: 1"=10'



EXISTING - HEATHERBROOK COURT
 46' RIGHT OF WAY
 SCALE: 1"=10'



0 30' 60' 120'
 SCALE: 1"=60'



LEGEND:

- ⊙ = PRELIMINARY DRAINAGE OUTFALL
- = FIELD INLET TO STORM DRAIN SYSTEM
- = RETAINING WALL (BY 45° SLOPE)
- = EXISTING WETLANDS
- = APPROXIMATE SPOT ELEVATION
- = APPROXIMATE ROADWAY GRADE

EARTHWORK:
 APPROXIMATE CUT: 11,855 CY
 APPROXIMATE FILL: 11,570 CY

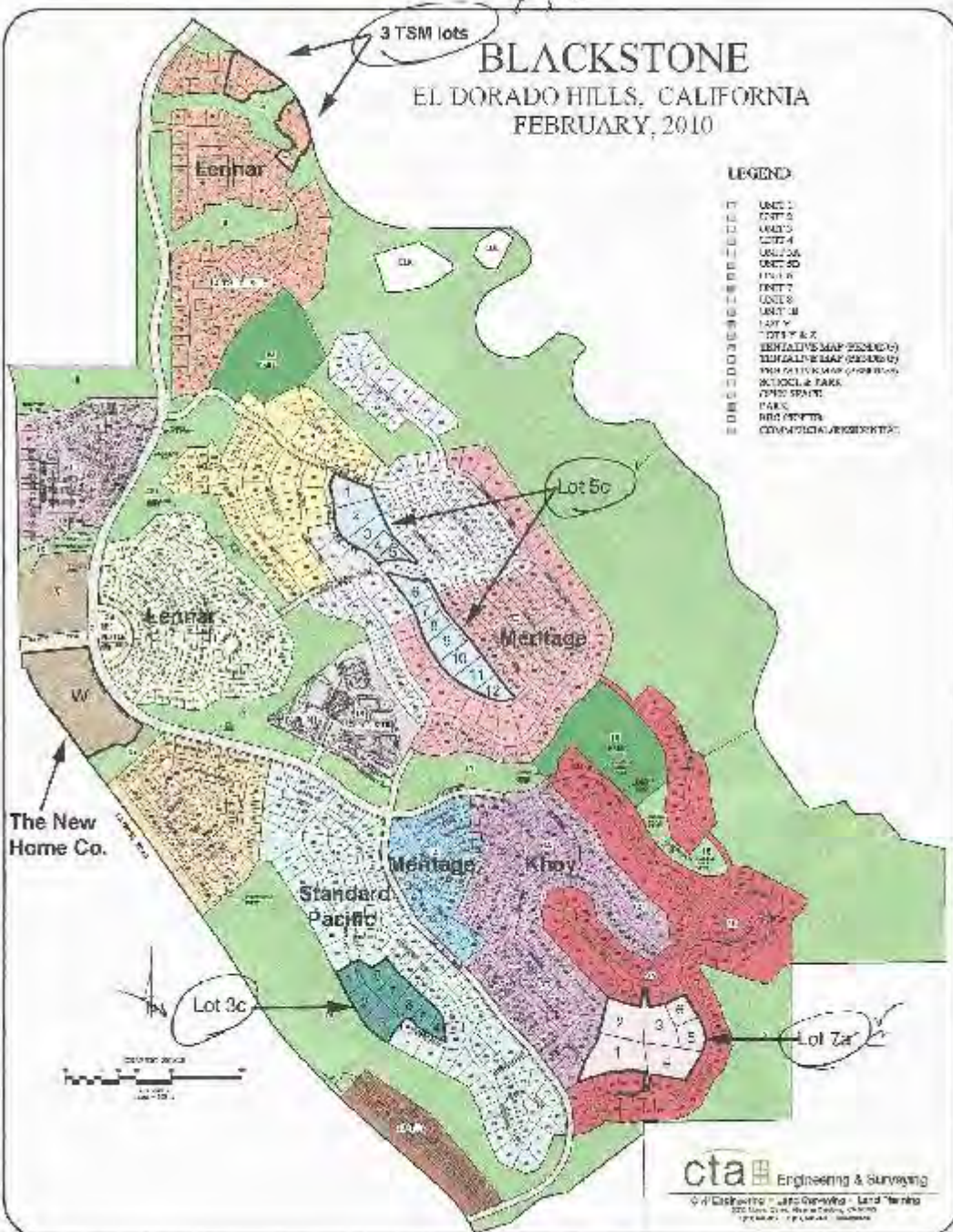
* PAVED LOCATIONS ARE SUBJECT TO CHANGE

cta Engineering & Surveying
 Civil Engineering, Land Surveying, Utility Planning
 1500 W. CLARKSVILLE AVENUE, SUITE 100
 SACRAMENTO, CALIFORNIA 95811
 TEL: (916) 486-1100 FAX: (916) 486-1101
 WWW.CTAENGINEERING.COM

y/z
BLACKSTONE
 EL DORADO HILLS, CALIFORNIA
 FEBRUARY, 2010

LEGEND

- 17 UNIT 1
- 16 UNIT 2
- 15 UNIT 3
- 14 UNIT 4
- 13 UNIT 5A
- 12 UNIT 5B
- 11 UNIT 6
- 10 UNIT 7
- 9 UNIT 8
- 8 UNIT 9
- 7 UNIT 10
- 6 UNIT 11
- 5 UNIT 12
- 4 UNIT 13
- 3 UNIT 14
- 2 UNIT 15
- 1 UNIT 16
- 17 UNIT 17
- 17 UNIT 18
- 17 UNIT 19
- 17 UNIT 20
- 17 UNIT 21
- 17 UNIT 22
- 17 UNIT 23
- 17 UNIT 24
- 17 UNIT 25
- 17 UNIT 26
- 17 UNIT 27
- 17 UNIT 28
- 17 UNIT 29
- 17 UNIT 30
- 17 UNIT 31
- 17 UNIT 32
- 17 UNIT 33
- 17 UNIT 34
- 17 UNIT 35
- 17 UNIT 36
- 17 UNIT 37
- 17 UNIT 38
- 17 UNIT 39
- 17 UNIT 40
- 17 UNIT 41
- 17 UNIT 42
- 17 UNIT 43
- 17 UNIT 44
- 17 UNIT 45
- 17 UNIT 46
- 17 UNIT 47
- 17 UNIT 48
- 17 UNIT 49
- 17 UNIT 50
- 17 UNIT 51
- 17 UNIT 52
- 17 UNIT 53
- 17 UNIT 54
- 17 UNIT 55
- 17 UNIT 56
- 17 UNIT 57
- 17 UNIT 58
- 17 UNIT 59
- 17 UNIT 60
- 17 UNIT 61
- 17 UNIT 62
- 17 UNIT 63
- 17 UNIT 64
- 17 UNIT 65
- 17 UNIT 66
- 17 UNIT 67
- 17 UNIT 68
- 17 UNIT 69
- 17 UNIT 70
- 17 UNIT 71
- 17 UNIT 72
- 17 UNIT 73
- 17 UNIT 74
- 17 UNIT 75
- 17 UNIT 76
- 17 UNIT 77
- 17 UNIT 78
- 17 UNIT 79
- 17 UNIT 80
- 17 UNIT 81
- 17 UNIT 82
- 17 UNIT 83
- 17 UNIT 84
- 17 UNIT 85
- 17 UNIT 86
- 17 UNIT 87
- 17 UNIT 88
- 17 UNIT 89
- 17 UNIT 90
- 17 UNIT 91
- 17 UNIT 92
- 17 UNIT 93
- 17 UNIT 94
- 17 UNIT 95
- 17 UNIT 96
- 17 UNIT 97
- 17 UNIT 98
- 17 UNIT 99
- 17 UNIT 100



cta Engineering & Surveying
 4400 Eastman - Suite 200 - El Dorado Hills, CA 95762
 916-437-1111
 www.cta-engineering.com